

Amado Crest at Summerlin  
**CHRISTOPHER**

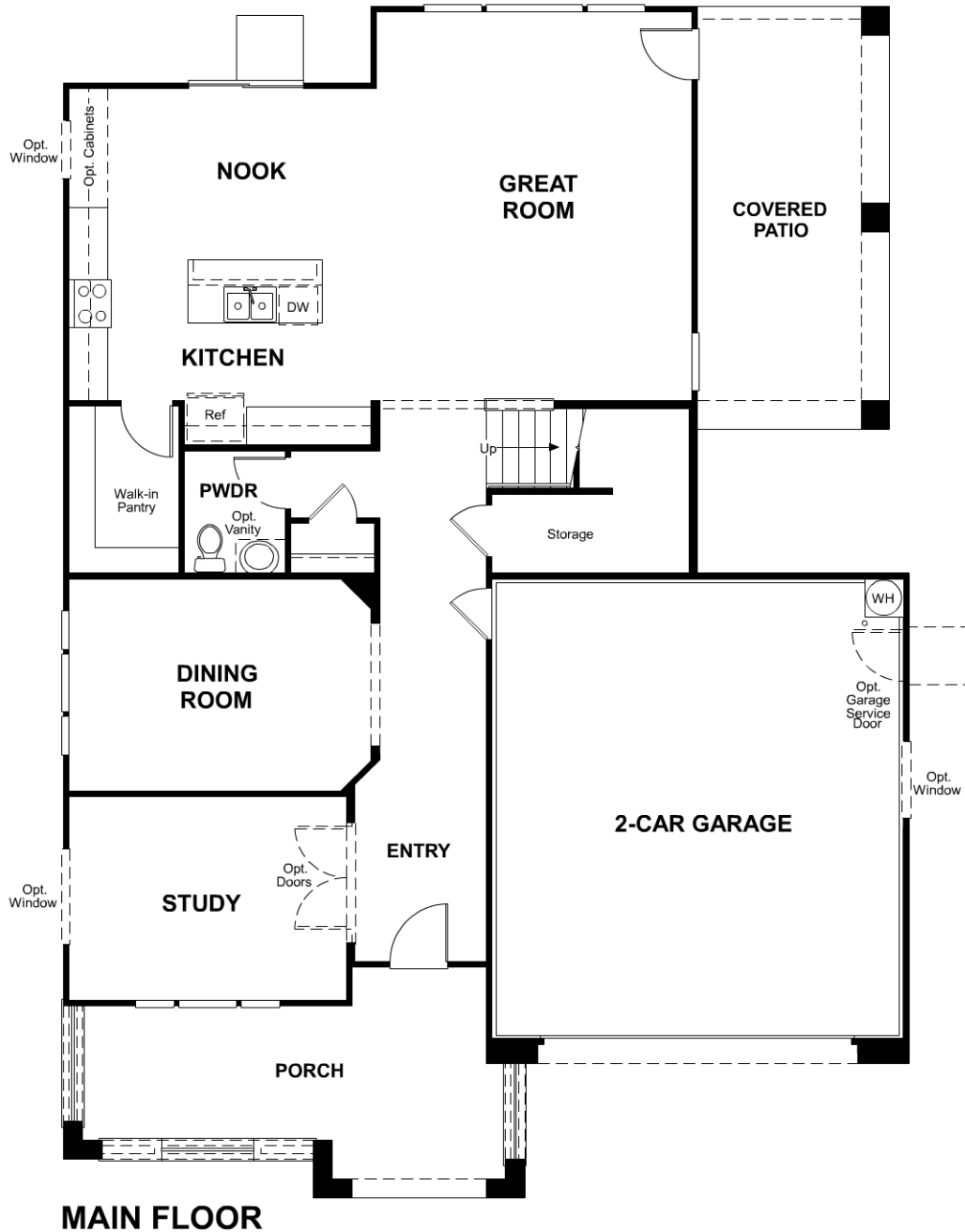
**Base Price:**  
\$381,950

**Plan Ready to Build**

**Stories:** 2  
**Bedrooms:** 4

**Garage:** 2-car

**Floor plan**  
Main Floor



**COMMUNITY LOCATION**  
5595 Bethany Bend Drive  
Las Vegas, NV 89135  
702-641-0135

**HOME GALLERY**  
7770 Dean Martin Drive  
Las Vegas, NV 89139  
877-420-1868

Plans and elevations are an artist's conception only and should not be relied upon as a representation of a completed house. The actual home as constructed may or may not contain the features and layouts depicted. Floor plans, elevations, features and related information, and information concerning the pricing and availability of our homes, are subject to change without notice. "Quick Move-In", "Home Under Construction" and "Model Home For Sale" pricing may include special savings. See Sales Associate for details. Drawings shown are not to scale.

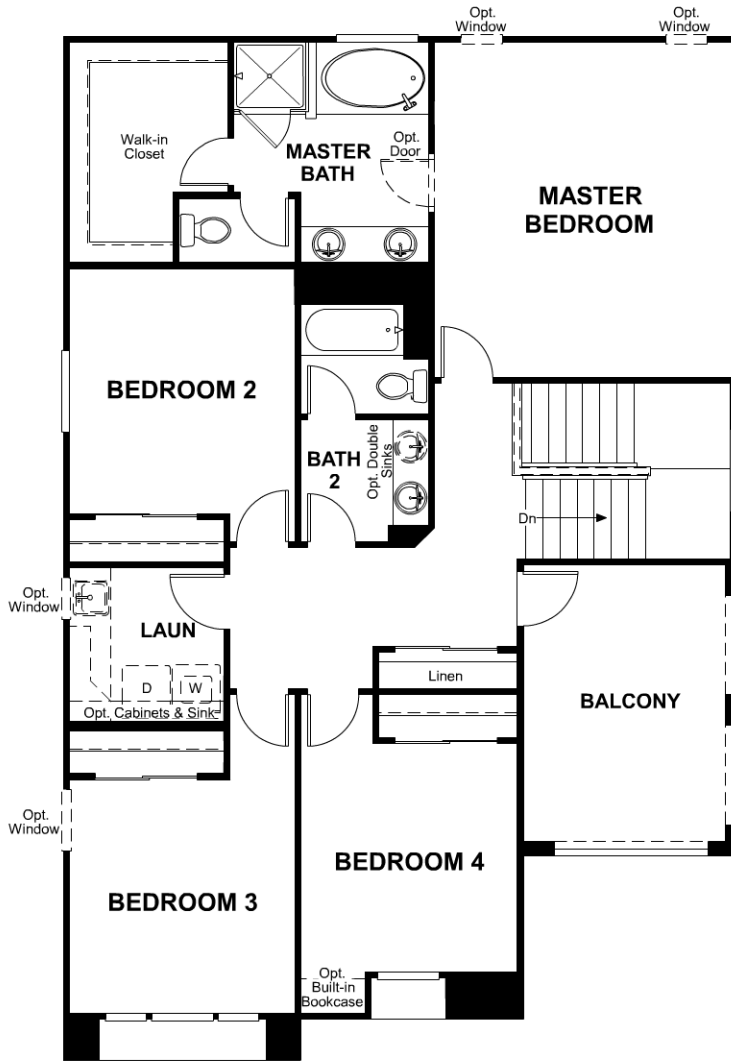
Amado Crest at Summerlin  
**CHRISTOPHER**

**Base Price:** **Plan Ready to Build**  
**\$381,950**

**Stories:** 2  
**Bedrooms:** 4

**Garage:** 2-car

**Floor plan**  
Second Floor



**SECOND FLOOR**

**COMMUNITY LOCATION**  
5595 Bethany Bend Drive  
Las Vegas, NV 89135  
702-641-0135

**HOME GALLERY**  
7770 Dean Martin Drive  
Las Vegas, NV 89139  
877-420-1868

Plans and elevations are an artist's conception only and should not be relied upon as a representation of a completed house. The actual home as constructed may or may not contain the features and layouts depicted. Floor plans, elevations, features and related information, and information concerning the pricing and availability of our homes, are subject to change without notice. "Quick Move-In", "Home Under Construction" and "Model Home For Sale" pricing may include special savings. See Sales Associate for details. Drawings shown are not to scale.