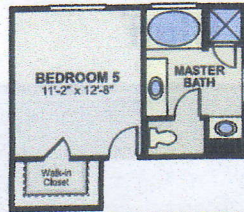


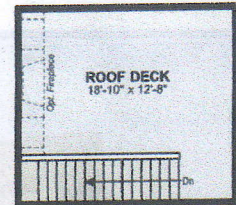
PRELIMINARY

Bluff

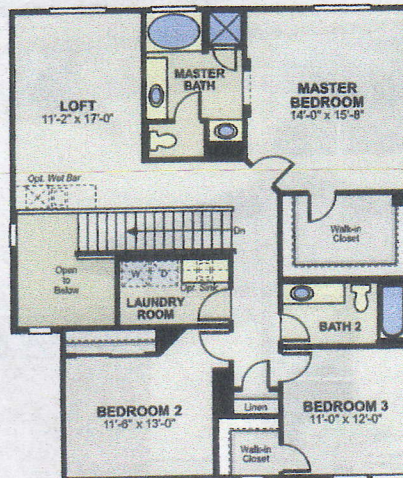
- Up to 5 Bedrooms
- 2.5 Baths
- Great Room
- Optional Bedroom 4/Bath 3
- Optional Bedroom 5
- Optional Rooftop Deck
- Optional Elevation B/C
- Optional Wi-Fi Station
- 2-Car Garage



OPTIONAL BEDROOM 5



OPTIONAL ROOF DECK



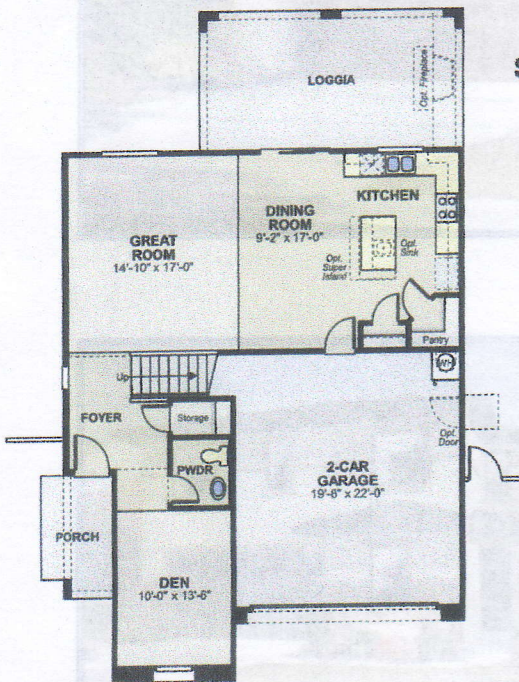
SECOND FLOOR



**STAIRS TO
OPTIONAL ROOF DECK**



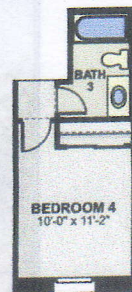
OPTIONAL WI-FI STATION



FIRST FLOOR



OPTIONAL ELEVATION B/C



**OPTIONAL
BEDROOM 4
W/ BATH 3**

RYLAND HOMES®
rylandvegas.com

5610 Trilling Bird Drive, Las Vegas, NV 89129 • Phone (702) 487-6378 • Fax (702) 489-4153

Prices, plans, elevations and specifications are subject to change without notice. Square footage shown is approximate. Photographs and/or renderings are for illustrative purposes only. Information shown believed to be accurate but not warranted. Plans are the copyrighted property of Ryland Homes. See Sales Counselor for details. (c) 2012 Ryland Homes Nevada, LLC